

Graphics Card Configuration

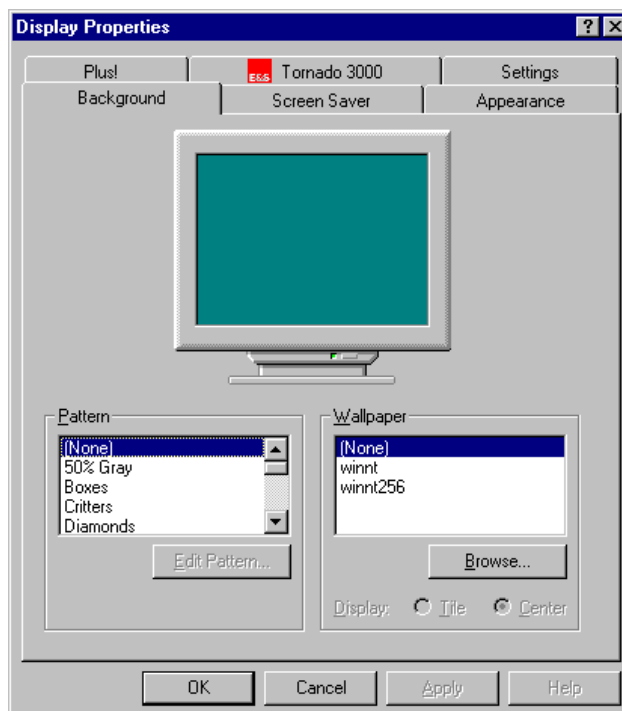
COPYRIGHT 2000, AUTOMETRIC, INC.

CONFIGURING THE EVANS & SUTHERLAND TORNADO 3000 GRAPHICS CARD

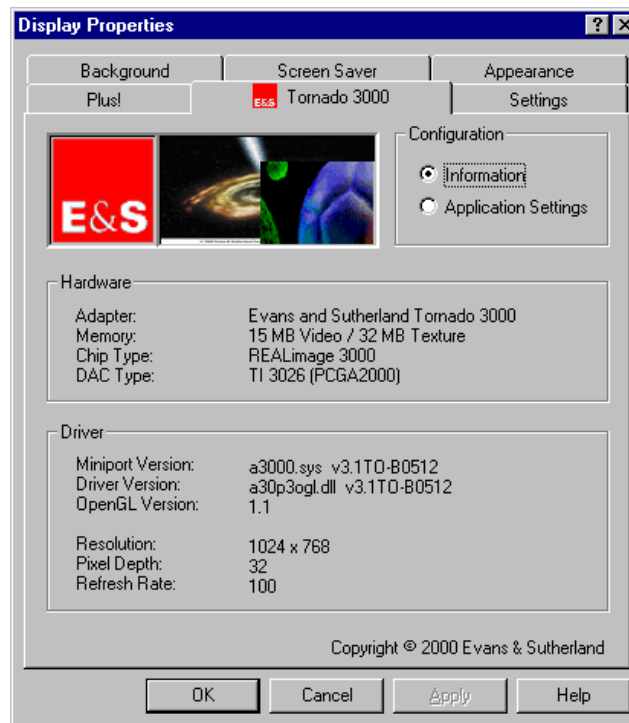
Note: See the documentation that came with the card for driver installation instructions. If you are replacing a graphics card, you must first uninstall the existing driver using the Start -> Settings -> Control Panel -> Add/Remove Programs option in Windows before installing the new driver.

To configure the Tornado 3000 graphics card:

- 1 Place the cursor over a blank portion of your desktop.
- 2 Single-click the right mouse button to display a pop-up menu and choose the *Properties* option from the menu. The *Display Properties* dialog is displayed.

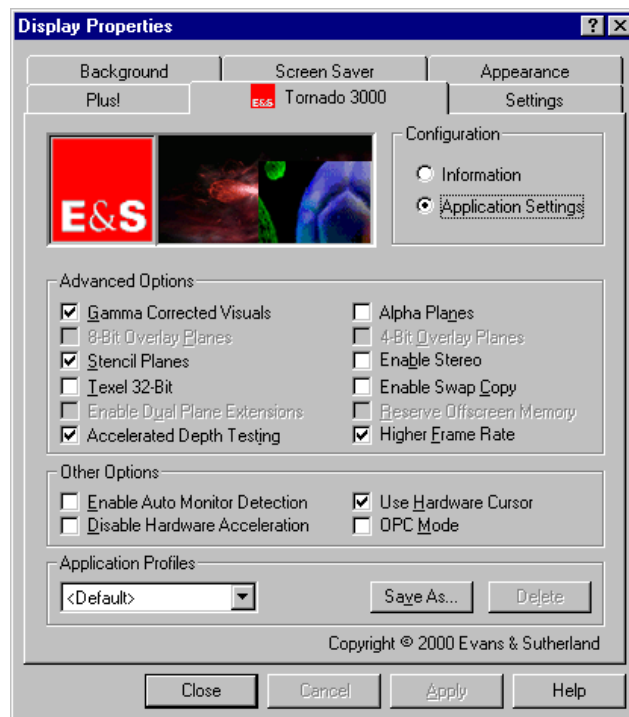


- 3 Click on the *Tornado 3000* tab to display the graphics card driver information.



Once you have determined that you have the driver installed, make the following configuration changes within the *Display Properties* dialog:

- 4 Click the *Application Settings* radio button in the Configuration area. This displays various configuration options.



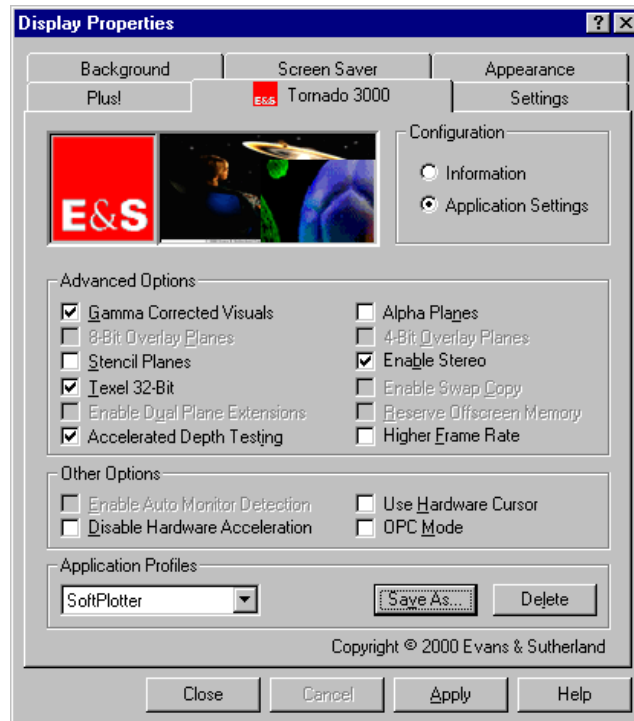
- 5 In the *Advanced Options* section, enable each of the following by clicking in the check box to select the item. All other items in the *Advanced Options* section should be unchecked. The items which should be enabled are:

Gamma Corrected Visuals

Texel 32-Bit

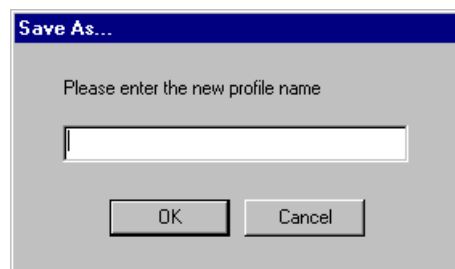
Accelerated Depth Testing

Enable Stereo

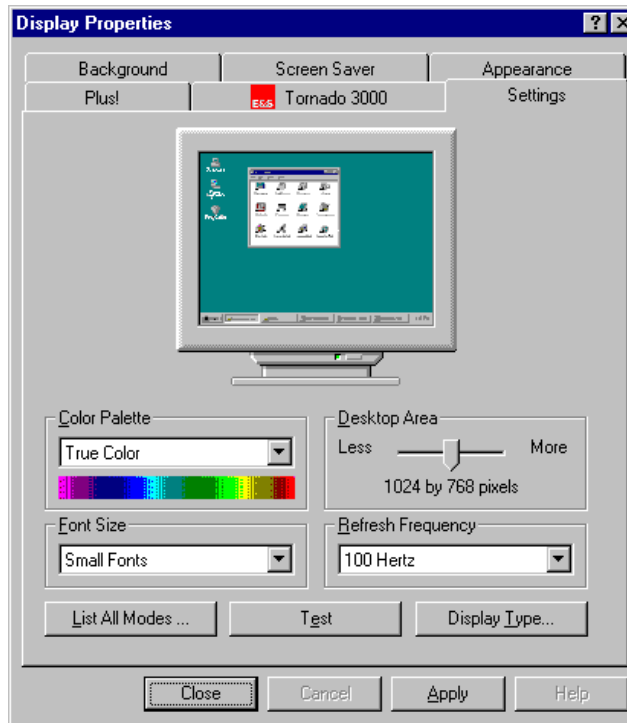


In the *Other Options* section, all of the options should be **unchecked**.

- 6 You need to save these application settings as a new application profile. In the Application Profile section, click the **Save As** button.
- 7 Specify "SoftPlotter" as the name for the new application profile and click **OK** to create the new profile.



- 8 Set the Desktop Area and the Refresh Frequency in the *Display Properties* dialog.



Press the **Test** button to make sure you can see your display with the configuration you chose.

- 9 Press the **Apply** button if you to want to keep the settings. Press the **Close** button to exit the dialog.

This concludes your Tornado 3000 configuration.